

Appendix: Environmental Justice Screens along projected rail lines through Texas likely to transport High-level radioactive waste to the proposed ISP/WCS site.

The environmental justice screens were done using EPA’s EJSCREEN: Environmental Justice Screening and Mapping Tool (<https://www.epa.gov/ejscreen>)

Rail segment	population	% minority	% hispanic	% who speak Spanish at home	
				Speak English Well	Do not Speak English Well
El Paso to Monihans	100,985	94%	92%	51%	49%
Bexar County	86,262	88%	72%	59%	41%
Bexar County (route 2)	90,644	78%	71%	58%	42%
Houston to San Antonio	114,433	67%	67%	79%	21%
Midland to Eunice	37,415	70%	63%	62%	38%
Harris county	103,509	67%	45%	70%	30%
Beaumont to Houston (southern route)	49,295	72%	42%	89%	11%
Texarkansas to Dallas	92,054	63%	33%	71%	29%
Ft. Worth to Midland	84,583	37%	28%	87%	13%
Tarrant county	74,450	49%	26%	78%	22%
Shreveport to Dallas	97,323	61%	26%	73%	27%
Total Population	930,953				



Location: User-specified linear location
 Ring (buffer): 0.5-mile radius
 Description: El Paso to Monahans

Summary of ACS Estimates		2012 - 2016
Population		100,985
Population Density (per sq. mile)		641
Minority Population		94,588
% Minority		94%
Households		31,744
Housing Units		35,698
Housing Units Built Before 1950		7,868
Per Capita Income		14,821
Land Area (sq. miles) (Source: SF1)		157.65
% Land Area		100%
Water Area (sq. miles) (Source: SF1)		0.28
% Water Area		0%

	2012 - 2016 ACS Estimates	Percent	MOE (±)
Population by Race			
Total	100,985	100%	848
Population Reporting One Race	99,485	99%	2,317
White	85,181	84%	878
Black	1,837	2%	361
American Indian	870	1%	172
Asian	207	0%	162
Pacific Islander	54	0%	70
Some Other Race	11,336	11%	674
Population Reporting Two or More Races	1,500	1%	145
Total Hispanic Population	92,414	92%	796
Total Non-Hispanic Population	8,571		
White Alone	6,397	6%	273
Black Alone	1,546	2%	361
American Indian Alone	179	0%	109
Non-Hispanic Asian Alone	150	0%	156
Pacific Islander Alone	37	0%	70
Other Race Alone	71	0%	53
Two or More Races Alone	191	0%	108
Population by Sex			
Male	50,431	50%	580
Female	50,554	50%	616
Population by Age			
Age 0-4	6,696	7%	338
Age 0-17	25,282	25%	411
Age 18+	75,703	75%	577
Age 65+	15,884	16%	262

Data Note: Detail may not sum to totals due to rounding. Hispanic population can be of any race.
 N/A means not available. Source: U.S. Census Bureau, American Community Survey (ACS) 2012 - 2016.



Location: User-specified linear location
 Ring (buffer): 0.5-mile radius
 Description: El Paso to Monahans

	2012 - 2016 ACS Estimates	Percent	MOE (±)
Population 25+ by Educational Attainment			
Total	63,906	100%	526
Less than 9th Grade	17,747	28%	270
9th - 12th Grade, No Diploma	8,913	14%	230
High School Graduate	16,825	26%	374
Some College, No Degree	15,070	24%	263
Associate Degree	3,359	5%	164
Bachelor's Degree or more	5,351	8%	149
Population Age 5+ Years by Ability to Speak English			
Total	94,289	100%	753
Speak only English	15,280	16%	326
Non-English at Home ¹⁺²⁺³⁺⁴	79,009	84%	618
¹ Speak English "very well"	39,150	42%	459
² Speak English "well"	15,806	17%	271
³ Speak English "not well"	11,365	12%	382
⁴ Speak English "not at all"	12,687	13%	340
³⁺⁴ Speak English "less than well"	24,052	26%	511
²⁺³⁺⁴ Speak English "less than very well"	39,859	42%	578
Linguistically Isolated Households*			
Total	10,767	100%	145
Speak Spanish	10,727	100%	144
Speak Other Indo-European Languages	33	0%	54
Speak Asian-Pacific Island Languages	5	0%	27
Speak Other Languages	2	0%	13
Households by Household Income			
Household Income Base	31,744	100%	207
< \$15,000	9,033	28%	162
\$15,000 - \$25,000	5,304	17%	141
\$25,000 - \$50,000	9,823	31%	199
\$50,000 - \$75,000	3,664	12%	127
\$75,000 +	3,920	12%	133
Occupied Housing Units by Tenure			
Total	31,744	100%	207
Owner Occupied	17,646	56%	163
Renter Occupied	14,098	44%	188
Employed Population Age 16+ Years			
Total	79,139	100%	594
In Labor Force	41,884	53%	501
Civilian Unemployed in Labor Force	4,215	5%	198
Not In Labor Force	37,255	47%	446

Data Note: Detail may not sum to totals due to rounding. Hispanic population can be of any race.

N/A means not available. Source: U.S. Census Bureau, American Community Survey (ACS)

*Households in which no one 14 and over speaks English "very well" or speaks English only.



Location: User-specified linear location
 Ring (buffer): 0.5-mile radius
 Description: El Paso to Monahans

	2012 - 2016 ACS Estimates	Percent	MOE (±)
Population by Language Spoken at Home*			
Total (persons age 5 and above)	78,655	100%	597
English	12,707	16%	349
Spanish	65,534	83%	546
French	85	0%	156
French Creole	N/A	N/A	N/A
Italian	N/A	N/A	N/A
Portuguese	N/A	N/A	N/A
German	7	0%	18
Yiddish	N/A	N/A	N/A
Other West Germanic	N/A	N/A	N/A
Scandinavian	N/A	N/A	N/A
Greek	N/A	N/A	N/A
Russian	N/A	N/A	N/A
Polish	N/A	N/A	N/A
Serbo-Croatian	N/A	N/A	N/A
Other Slavic	N/A	N/A	N/A
Armenian	N/A	N/A	N/A
Persian	N/A	N/A	N/A
Gujarathi	N/A	N/A	N/A
Hindi	N/A	N/A	N/A
Urdu	N/A	N/A	N/A
Other Indic	N/A	N/A	N/A
Other Indo-European	162	0%	156
Chinese	25	0%	48
Japanese	N/A	N/A	N/A
Korean	19	0%	18
Mon-Khmer, Cambodian	N/A	N/A	N/A
Hmong	N/A	N/A	N/A
Thai	N/A	N/A	N/A
Laotian	N/A	N/A	N/A
Vietnamese	5	0%	18
Other Asian	26	0%	27
Tagalog	0	0%	18
Other Pacific Island	N/A	N/A	N/A
Navajo	N/A	N/A	N/A
Other Native American	N/A	N/A	N/A
Hungarian	N/A	N/A	N/A
Arabic	32	0%	166
Hebrew	N/A	N/A	N/A
African	N/A	N/A	N/A
Other and non-specified	53	0%	33
Total Non-English	65,948	84%	653

Data Note: Detail may not sum to totals due to rounding. Hispanic population can be of any race.
 N/A means not available. Source: U.S. Census Bureau, American Community Survey (ACS) 2012 - 2016.
 *Population by Language Spoken at Home is available at the census tract summary level and up.

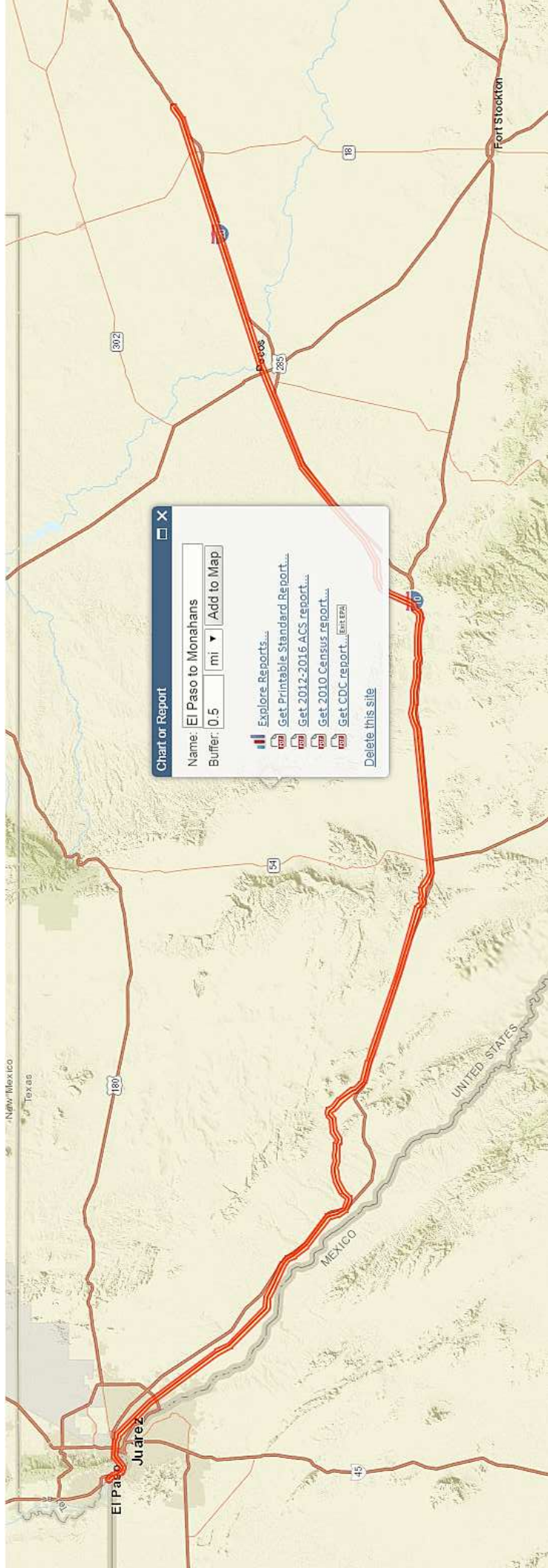


Chart or Report [X]

Name:

Buffer:

- [Explore Reports...](#)
- [Get Printable Standard Report...](#)
- [Get 2012-2016 ACS report...](#)
- [Get 2010 Census report...](#)
- [Get CDC report... \(EPA\)](#)

[Delete this site](#)



Location: User-specified linear location
 Ring (buffer): 0.5-mile radius
 Description: UP Bexar County

Summary of ACS Estimates		2012 - 2016
Population		86,262
Population Density (per sq. mile)		2,303
Minority Population		74,057
% Minority		86%
Households		28,146
Housing Units		31,334
Housing Units Built Before 1950		9,040
Per Capita Income		18,974
Land Area (sq. miles) (Source: SF1)		37.46
% Land Area		99%
Water Area (sq. miles) (Source: SF1)		0.33
% Water Area		1%

	2012 - 2016 ACS Estimates	Percent	MOE (±)
Population by Race			
Total	86,262	100%	1,024
Population Reporting One Race	84,081	97%	2,696
White	61,542	71%	1,009
Black	9,864	11%	546
American Indian	815	1%	270
Asian	905	1%	192
Pacific Islander	39	0%	67
Some Other Race	10,916	13%	612
Population Reporting Two or More Races	2,181	3%	369
Total Hispanic Population	62,138	72%	918
Total Non-Hispanic Population	24,125		
White Alone	12,206	14%	585
Black Alone	9,551	11%	546
American Indian Alone	198	0%	205
Non-Hispanic Asian Alone	800	1%	192
Pacific Islander Alone	18	0%	67
Other Race Alone	118	0%	170
Two or More Races Alone	1,235	1%	363
Population by Sex			
Male	41,799	48%	552
Female	44,463	52%	664
Population by Age			
Age 0-4	6,347	7%	297
Age 0-17	24,169	28%	382
Age 18+	62,093	72%	613
Age 65+	9,125	11%	229

Data Note: Detail may not sum to totals due to rounding. Hispanic population can be of any race.
 N/A means not available. Source: U.S. Census Bureau, American Community Survey (ACS) 2012 - 2016.

Location: User-specified linear location
 Ring (buffer): 0.5-mile radius
 Description: UP Bexar County

	2012 - 2016 ACS Estimates	Percent	MOE (±)
Population 25+ by Educational Attainment			
Total	53,664	100%	661
Less than 9th Grade	7,443	14%	279
9th - 12th Grade, No Diploma	7,499	14%	197
High School Graduate	16,226	30%	393
Some College, No Degree	14,889	28%	323
Associate Degree	3,188	6%	169
Bachelor's Degree or more	7,607	14%	278
Population Age 5+ Years by Ability to Speak English			
Total	79,916	100%	899
Speak only English	39,796	50%	640
Non-English at Home ¹⁺²⁺³⁺⁴	40,120	50%	517
¹ Speak English "very well"	27,147	34%	437
² Speak English "well"	5,680	7%	236
³ Speak English "not well"	4,627	6%	357
⁴ Speak English "not at all"	2,667	3%	172
³⁺⁴ Speak English "less than well"	7,293	9%	362
²⁺³⁺⁴ Speak English "less than very well"	12,973	16%	413
Linguistically Isolated Households*			
Total	2,669	100%	146
Speak Spanish	2,603	98%	145
Speak Other Indo-European Languages	9	0%	18
Speak Asian-Pacific Island Languages	50	2%	52
Speak Other Languages	7	0%	18
Households by Household Income			
Household Income Base	28,146	100%	219
< \$15,000	4,978	18%	123
\$15,000 - \$25,000	4,444	16%	176
\$25,000 - \$50,000	8,571	30%	204
\$50,000 - \$75,000	4,901	17%	137
\$75,000 +	5,252	19%	186
Occupied Housing Units by Tenure			
Total	28,146	100%	219
Owner Occupied	14,646	52%	220
Renter Occupied	13,500	48%	204
Employed Population Age 16+ Years			
Total	64,472	100%	785
In Labor Force	39,841	62%	485
Civilian Unemployed in Labor Force	3,456	5%	175
Not In Labor Force	24,631	38%	405

Data Note: Detail may not sum to totals due to rounding. Hispanic population can be of any race.

N/A means not available. Source: U.S. Census Bureau, American Community Survey (ACS)

*Households in which no one 14 and over speaks English "very well" or speaks English only.



Location: User-specified linear location
 Ring (buffer): 0.5-mile radius
 Description: UP Bexar County

	2012 - 2016 ACS Estimates	Percent	MOE (±)
Population by Language Spoken at Home*			
Total (persons age 5 and above)	79,591	100%	865
English	40,276	51%	732
Spanish	38,108	48%	552
French	95	0%	62
French Creole	N/A	N/A	N/A
Italian	N/A	N/A	N/A
Portuguese	N/A	N/A	N/A
German	177	0%	86
Yiddish	N/A	N/A	N/A
Other West Germanic	N/A	N/A	N/A
Scandinavian	N/A	N/A	N/A
Greek	N/A	N/A	N/A
Russian	N/A	N/A	N/A
Polish	N/A	N/A	N/A
Serbo-Croatian	N/A	N/A	N/A
Other Slavic	N/A	N/A	N/A
Armenian	N/A	N/A	N/A
Persian	N/A	N/A	N/A
Gujarathi	N/A	N/A	N/A
Hindi	N/A	N/A	N/A
Urdu	N/A	N/A	N/A
Other Indic	N/A	N/A	N/A
Other Indo-European	126	0%	84
Chinese	43	0%	62
Japanese	N/A	N/A	N/A
Korean	97	0%	372
Mon-Khmer, Cambodian	N/A	N/A	N/A
Hmong	N/A	N/A	N/A
Thai	N/A	N/A	N/A
Laotian	N/A	N/A	N/A
Vietnamese	140	0%	115
Other Asian	240	0%	190
Tagalog	176	0%	148
Other Pacific Island	N/A	N/A	N/A
Navajo	N/A	N/A	N/A
Other Native American	N/A	N/A	N/A
Hungarian	N/A	N/A	N/A
Arabic	10	0%	27
Hebrew	N/A	N/A	N/A
African	N/A	N/A	N/A
Other and non-specified	86	0%	106
Total Non-English	39,315	49%	1,133

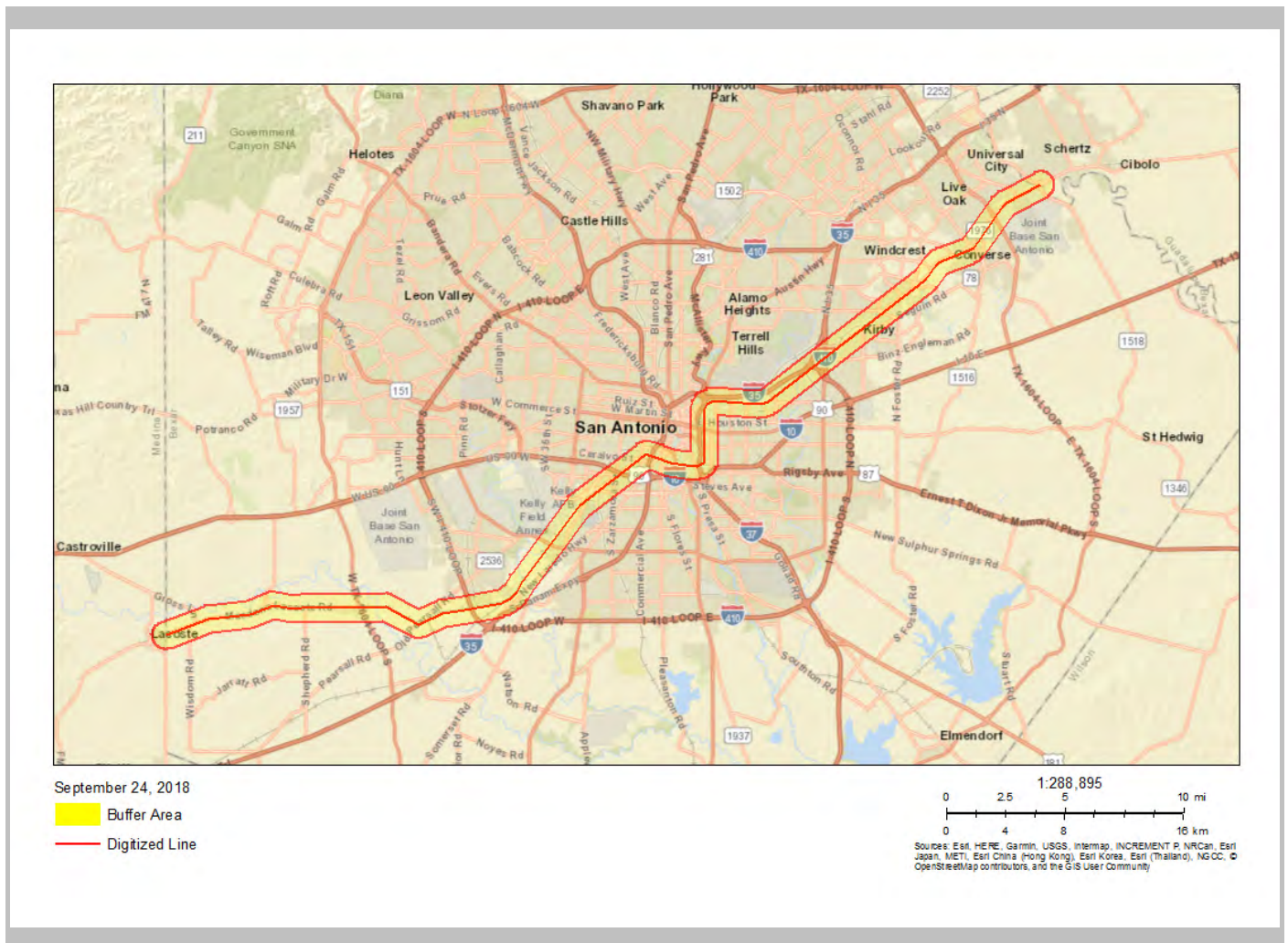
Data Note: Detail may not sum to totals due to rounding. Hispanic population can be of any race.
 N/A means not available. Source: U.S. Census Bureau, American Community Survey (ACS) 2012 - 2016.
 *Population by Language Spoken at Home is available at the census tract summary level and up.

0.5 mile Ring around the Corridor, TEXAS, EPA Region 6

Approximate Population: 86,262

Input Area (sq. miles): 40.72

UP Bexar County



Sites reporting to EPA	
Superfund NPL	0
Hazardous Waste Treatment, Storage, and Disposal Facilities (TSDF)	11

Location: User-specified linear location
 Ring (buffer): 0.5-mile radius
 Description: UP Bexar County, Route 2

Summary of ACS Estimates		2012 - 2016
Population		90,644
Population Density (per sq. mile)		2,494
Minority Population		68,865
% Minority		76%
Households		30,354
Housing Units		33,776
Housing Units Built Before 1950		9,468
Per Capita Income		22,549
Land Area (sq. miles) (Source: SF1)		36.35
% Land Area		99%
Water Area (sq. miles) (Source: SF1)		0.36
% Water Area		1%

	2012 - 2016 ACS Estimates	Percent	MOE (±)
Population by Race			
Total	90,644	100%	1,013
Population Reporting One Race	88,655	98%	2,493
White	76,374	84%	1,009
Black	2,718	3%	379
American Indian	945	1%	262
Asian	964	1%	187
Pacific Islander	27	0%	44
Some Other Race	7,627	8%	612
Population Reporting Two or More Races	1,989	2%	351
Total Hispanic Population	64,366	71%	918
Total Non-Hispanic Population	26,278		
White Alone	21,779	24%	690
Black Alone	2,518	3%	378
American Indian Alone	123	0%	83
Non-Hispanic Asian Alone	917	1%	187
Pacific Islander Alone	13	0%	44
Other Race Alone	53	0%	95
Two or More Races Alone	875	1%	349
Population by Sex			
Male	45,058	50%	552
Female	45,586	50%	728
Population by Age			
Age 0-4	5,588	6%	304
Age 0-17	21,844	24%	405
Age 18+	68,800	76%	626
Age 65+	11,929	13%	229

Data Note: Detail may not sum to totals due to rounding. Hispanic population can be of any race.
 N/A means not available. Source: U.S. Census Bureau, American Community Survey (ACS) 2012 - 2016.

Location: User-specified linear location
 Ring (buffer): 0.5-mile radius
 Description: UP Bexar County, Route 2

	2012 - 2016 ACS Estimates	Percent	MOE (±)
Population 25+ by Educational Attainment			
Total	59,790	100%	661
Less than 9th Grade	7,913	13%	279
9th - 12th Grade, No Diploma	7,127	12%	174
High School Graduate	16,088	27%	393
Some College, No Degree	17,028	28%	497
Associate Degree	3,668	6%	174
Bachelor's Degree or more	11,634	19%	254
Population Age 5+ Years by Ability to Speak English			
Total	85,056	100%	899
Speak only English	42,632	50%	640
Non-English at Home ¹⁺²⁺³⁺⁴	42,424	50%	517
¹ Speak English "very well"	29,359	35%	455
² Speak English "well"	5,585	7%	201
³ Speak English "not well"	4,589	5%	357
⁴ Speak English "not at all"	2,890	3%	172
³⁺⁴ Speak English "less than well"	7,479	9%	362
²⁺³⁺⁴ Speak English "less than very well"	13,064	15%	413
Linguistically Isolated Households*			
Total	3,074	100%	146
Speak Spanish	2,992	97%	145
Speak Other Indo-European Languages	35	1%	21
Speak Asian-Pacific Island Languages	47	2%	22
Speak Other Languages	0	0%	13
Households by Household Income			
Household Income Base	30,354	100%	219
< \$15,000	5,376	18%	149
\$15,000 - \$25,000	4,313	14%	176
\$25,000 - \$50,000	7,410	24%	189
\$50,000 - \$75,000	5,439	18%	183
\$75,000 +	7,816	26%	207
Occupied Housing Units by Tenure			
Total	30,354	100%	219
Owner Occupied	16,887	56%	212
Renter Occupied	13,467	44%	190
Employed Population Age 16+ Years			
Total	71,218	100%	774
In Labor Force	43,366	61%	603
Civilian Unemployed in Labor Force	3,208	5%	294
Not In Labor Force	27,852	39%	401

Data Note: Detail may not sum to totals due to rounding. Hispanic population can be of any race.

N/A means not available. Source: U.S. Census Bureau, American Community Survey (ACS)

*Households in which no one 14 and over speaks English "very well" or speaks English only.



Location: User-specified linear location
 Ring (buffer): 0.5-mile radius
 Description: UP Bexar County, Route 2

	2012 - 2016 ACS Estimates	Percent	MOE (±)
Population by Language Spoken at Home*			
Total (persons age 5 and above)	86,950	100%	861
English	43,961	51%	736
Spanish	41,396	48%	584
French	84	0%	130
French Creole	N/A	N/A	N/A
Italian	N/A	N/A	N/A
Portuguese	N/A	N/A	N/A
German	328	0%	133
Yiddish	N/A	N/A	N/A
Other West Germanic	N/A	N/A	N/A
Scandinavian	N/A	N/A	N/A
Greek	N/A	N/A	N/A
Russian	N/A	N/A	N/A
Polish	N/A	N/A	N/A
Serbo-Croatian	N/A	N/A	N/A
Other Slavic	N/A	N/A	N/A
Armenian	N/A	N/A	N/A
Persian	N/A	N/A	N/A
Gujarathi	N/A	N/A	N/A
Hindi	N/A	N/A	N/A
Urdu	N/A	N/A	N/A
Other Indic	N/A	N/A	N/A
Other Indo-European	225	0%	130
Chinese	76	0%	103
Japanese	N/A	N/A	N/A
Korean	165	0%	171
Mon-Khmer, Cambodian	N/A	N/A	N/A
Hmong	N/A	N/A	N/A
Thai	N/A	N/A	N/A
Laotian	N/A	N/A	N/A
Vietnamese	153	0%	115
Other Asian	203	0%	113
Tagalog	116	0%	80
Other Pacific Island	N/A	N/A	N/A
Navajo	N/A	N/A	N/A
Other Native American	N/A	N/A	N/A
Hungarian	N/A	N/A	N/A
Arabic	57	0%	58
Hebrew	N/A	N/A	N/A
African	N/A	N/A	N/A
Other and non-specified	52	0%	83
Total Non-English	42,989	49%	1,133

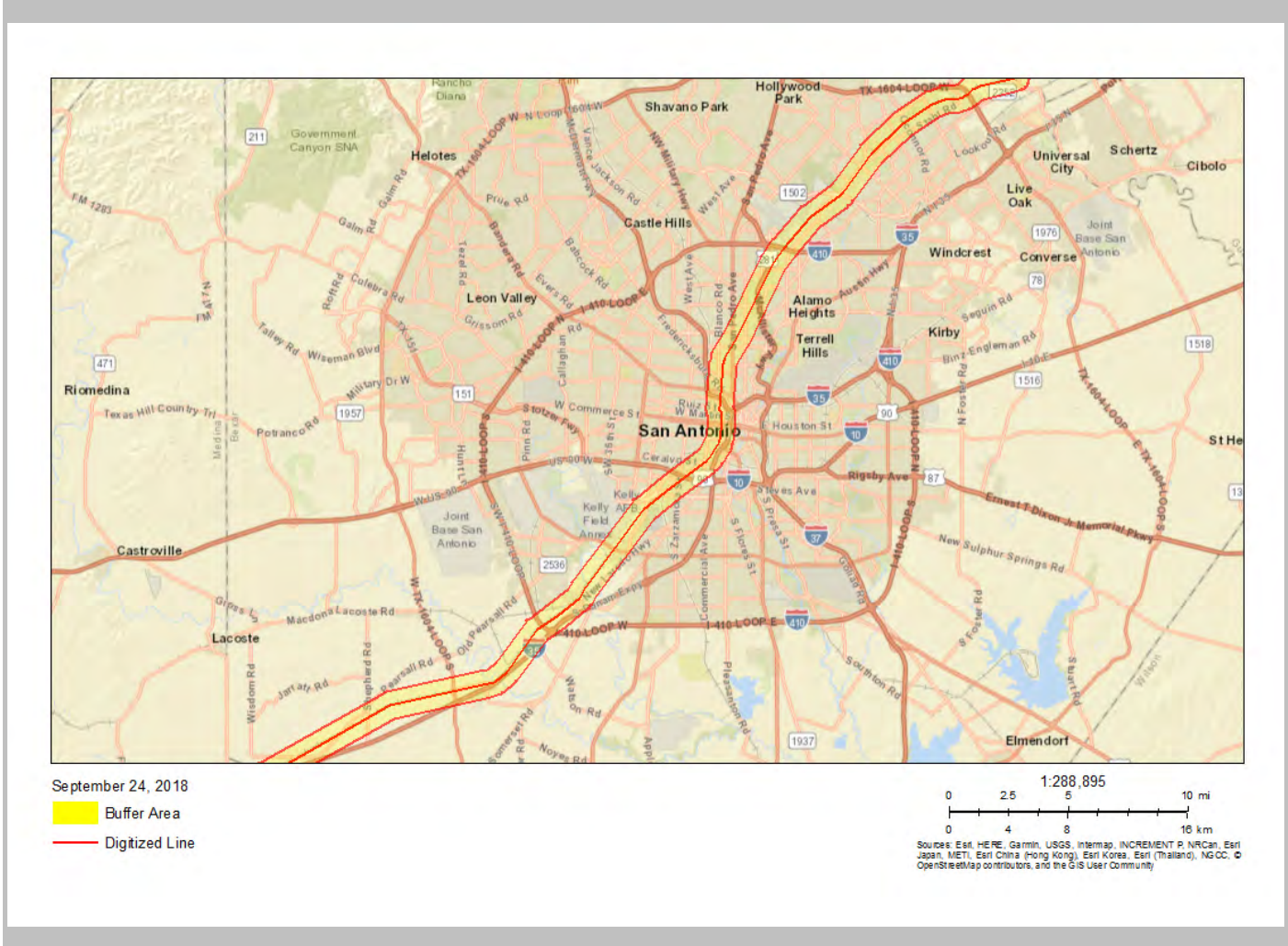
Data Note: Detail may not sum to totals due to rounding. Hispanic population can be of any race.
 N/A means not available. Source: U.S. Census Bureau, American Community Survey (ACS) 2012 - 2016.
 *Population by Language Spoken at Home is available at the census tract summary level and up.

0.5 mile Ring around the Corridor, TEXAS, EPA Region 6

Approximate Population: 90,644

Input Area (sq. miles): 40.25

UP Bexar County, Route 2 (The study area contains 1 blockgroup(s) with zero population.)



Sites reporting to EPA	
Superfund NPL	0
Hazardous Waste Treatment, Storage, and Disposal Facilities (TSDF)	9



Location: User-specified linear location
 Ring (buffer): 0.5-mile radius
 Description: UP Houston to San Antonio

Summary of ACS Estimates		2012 - 2016
Population		114,433
Population Density (per sq. mile)		757
Minority Population		76,359
% Minority		67%
Households		37,834
Housing Units		41,861
Housing Units Built Before 1950		4,640
Per Capita Income		24,901
Land Area (sq. miles) (Source: SF1)		151.10
% Land Area		99%
Water Area (sq. miles) (Source: SF1)		1.63
% Water Area		1%

	2012 - 2016 ACS Estimates	Percent	MOE (±)
Population by Race			
Total	114,433	100%	2,782
Population Reporting One Race	111,083	97%	7,516
White	70,127	61%	2,476
Black	20,475	18%	1,906
American Indian	499	0%	612
Asian	9,040	8%	1,477
Pacific Islander	114	0%	149
Some Other Race	10,828	9%	896
Population Reporting Two or More Races	3,350	3%	687
Total Hispanic Population	44,877	39%	1,989
Total Non-Hispanic Population	69,556		
White Alone	38,074	33%	2,152
Black Alone	19,936	17%	1,799
American Indian Alone	303	0%	612
Non-Hispanic Asian Alone	8,971	8%	1,477
Pacific Islander Alone	25	0%	67
Other Race Alone	143	0%	170
Two or More Races Alone	2,105	2%	383
Population by Sex			
Male	54,981	48%	1,773
Female	59,452	52%	1,694
Population by Age			
Age 0-4	9,519	8%	979
Age 0-17	32,742	29%	1,543
Age 18+	81,691	71%	2,092
Age 65+	12,537	11%	620

Data Note: Detail may not sum to totals due to rounding. Hispanic population can be of any race.
 N/A means not available. Source: U.S. Census Bureau, American Community Survey (ACS) 2012 - 2016.



Location: User-specified linear location
 Ring (buffer): 0.5-mile radius
 Description: UP Houston to San Antonio

	2012 - 2016 ACS Estimates	Percent	MOE (±)
Population 25+ by Educational Attainment			
Total	71,603	100%	1,602
Less than 9th Grade	5,335	7%	359
9th - 12th Grade, No Diploma	6,359	9%	376
High School Graduate	18,687	26%	872
Some College, No Degree	21,042	29%	1,348
Associate Degree	5,539	8%	747
Bachelor's Degree or more	20,181	28%	1,448
Population Age 5+ Years by Ability to Speak English			
Total	104,914	100%	2,537
Speak only English	67,602	64%	2,183
Non-English at Home ¹⁺²⁺³⁺⁴	37,313	36%	1,960
¹ Speak English "very well"	25,417	24%	1,634
² Speak English "well"	6,499	6%	843
³ Speak English "not well"	4,119	4%	489
⁴ Speak English "not at all"	1,278	1%	253
³⁺⁴ Speak English "less than well"	5,397	5%	534
²⁺³⁺⁴ Speak English "less than very well"	11,896	11%	997
Linguistically Isolated Households*			
Total	2,194	100%	334
Speak Spanish	1,699	77%	156
Speak Other Indo-European Languages	175	8%	220
Speak Asian-Pacific Island Languages	308	14%	195
Speak Other Languages	11	1%	27
Households by Household Income			
Household Income Base	37,834	100%	702
< \$15,000	4,307	11%	395
\$15,000 - \$25,000	3,831	10%	223
\$25,000 - \$50,000	8,851	23%	511
\$50,000 - \$75,000	6,532	17%	660
\$75,000 +	14,313	38%	1,221
Occupied Housing Units by Tenure			
Total	37,834	100%	702
Owner Occupied	25,526	67%	720
Renter Occupied	12,308	33%	631
Employed Population Age 16+ Years			
Total	85,493	100%	2,026
In Labor Force	54,560	64%	1,650
Civilian Unemployed in Labor Force	3,098	4%	493
Not In Labor Force	30,934	36%	1,437

Data Note: Detail may not sum to totals due to rounding. Hispanic population can be of any race.

N/A means not available. Source: U.S. Census Bureau, American Community Survey (ACS)

*Households in which no one 14 and over speaks English "very well" or speaks English only.



Location: User-specified linear location
 Ring (buffer): 0.5-mile radius
 Description: UP Houston to San Antonio

	2012 - 2016 ACS Estimates	Percent	MOE (±)
Population by Language Spoken at Home*			
Total (persons age 5 and above)	52,292	100%	865
English	34,793	67%	732
Spanish	16,405	31%	552
French	52	0%	62
French Creole	N/A	N/A	N/A
Italian	N/A	N/A	N/A
Portuguese	N/A	N/A	N/A
German	186	0%	86
Yiddish	N/A	N/A	N/A
Other West Germanic	N/A	N/A	N/A
Scandinavian	N/A	N/A	N/A
Greek	N/A	N/A	N/A
Russian	N/A	N/A	N/A
Polish	N/A	N/A	N/A
Serbo-Croatian	N/A	N/A	N/A
Other Slavic	N/A	N/A	N/A
Armenian	N/A	N/A	N/A
Persian	N/A	N/A	N/A
Gujarathi	N/A	N/A	N/A
Hindi	N/A	N/A	N/A
Urdu	N/A	N/A	N/A
Other Indic	N/A	N/A	N/A
Other Indo-European	79	0%	84
Chinese	30	0%	62
Japanese	N/A	N/A	N/A
Korean	135	0%	372
Mon-Khmer, Cambodian	N/A	N/A	N/A
Hmong	N/A	N/A	N/A
Thai	N/A	N/A	N/A
Laotian	N/A	N/A	N/A
Vietnamese	59	0%	71
Other Asian	213	0%	190
Tagalog	220	0%	148
Other Pacific Island	N/A	N/A	N/A
Navajo	N/A	N/A	N/A
Other Native American	N/A	N/A	N/A
Hungarian	N/A	N/A	N/A
Arabic	9	0%	27
Hebrew	N/A	N/A	N/A
African	N/A	N/A	N/A
Other and non-specified	57	0%	106
Total Non-English	17,498	33%	1,133

Data Note: Detail may not sum to totals due to rounding. Hispanic population can be of any race.
 N/A means not available. Source: U.S. Census Bureau, American Community Survey (ACS) 2012 - 2016.
 *Population by Language Spoken at Home is available at the census tract summary level and up.



Esri, HERE, Garmin, NGA, USGS, NPS



Location: User-specified linear location
 Ring (buffer): 0.5-mile radius
 Description: Midland to Eunice Rail Line

Summary of ACS Estimates		2012 - 2016
Population		37,415
Population Density (per sq. mile)		356
Minority Population		26,051
% Minority		70%
Households		12,615
Housing Units		14,092
Housing Units Built Before 1950		1,673
Per Capita Income		25,622
Land Area (sq. miles) (Source: SF1)		105.10
% Land Area		100%
Water Area (sq. miles) (Source: SF1)		0.15
% Water Area		0%

	2012 - 2016 ACS Estimates	Percent	MOE (±)
Population by Race			
Total	37,415	100%	872
Population Reporting One Race	36,532	98%	2,249
White	30,373	81%	873
Black	2,269	6%	545
American Indian	240	1%	172
Asian	173	0%	231
Pacific Islander	0	0%	13
Some Other Race	3,477	9%	415
Population Reporting Two or More Races	882	2%	222
Total Hispanic Population	23,423	63%	756
Total Non-Hispanic Population	13,991		
White Alone	11,364	30%	639
Black Alone	2,033	5%	545
American Indian Alone	38	0%	156
Non-Hispanic Asian Alone	135	0%	231
Pacific Islander Alone	0	0%	13
Other Race Alone	0	0%	13
Two or More Races Alone	422	1%	176
Population by Sex			
Male	19,141	51%	585
Female	18,273	49%	520
Population by Age			
Age 0-4	3,422	9%	326
Age 0-17	10,944	29%	429
Age 18+	26,471	71%	473
Age 65+	3,901	10%	205

Data Note: Detail may not sum to totals due to rounding. Hispanic population can be of any race.
 N/A means not available. Source: U.S. Census Bureau, American Community Survey (ACS) 2012 - 2016.



Location: User-specified linear location
 Ring (buffer): 0.5-mile radius
 Description: Midland to Eunice Rail Line

	2012 - 2016 ACS Estimates	Percent	MOE (±)
Population 25+ by Educational Attainment			
Total	22,681	100%	482
Less than 9th Grade	2,990	13%	144
9th - 12th Grade, No Diploma	3,404	15%	242
High School Graduate	6,339	28%	258
Some College, No Degree	6,861	30%	308
Associate Degree	1,334	6%	194
Bachelor's Degree or more	3,087	14%	313
Population Age 5+ Years by Ability to Speak English			
Total	33,992	100%	757
Speak only English	17,639	52%	530
Non-English at Home ¹⁺²⁺³⁺⁴	16,353	48%	552
¹ Speak English "very well"	10,705	31%	421
² Speak English "well"	2,301	7%	201
³ Speak English "not well"	2,014	6%	280
⁴ Speak English "not at all"	1,332	4%	171
³⁺⁴ Speak English "less than well"	3,347	10%	283
²⁺³⁺⁴ Speak English "less than very well"	5,648	17%	292
Linguistically Isolated Households*			
Total	1,374	100%	126
Speak Spanish	1,354	99%	125
Speak Other Indo-European Languages	0	0%	13
Speak Asian-Pacific Island Languages	10	1%	27
Speak Other Languages	9	1%	16
Households by Household Income			
Household Income Base	12,615	100%	291
< \$15,000	1,592	13%	118
\$15,000 - \$25,000	1,475	12%	112
\$25,000 - \$50,000	3,015	24%	239
\$50,000 - \$75,000	1,977	16%	174
\$75,000 +	4,556	36%	276
Occupied Housing Units by Tenure			
Total	12,615	100%	291
Owner Occupied	8,338	66%	256
Renter Occupied	4,277	34%	236
Employed Population Age 16+ Years			
Total	27,363	100%	583
In Labor Force	17,780	65%	465
Civilian Unemployed in Labor Force	1,025	4%	159
Not In Labor Force	9,583	35%	307

Data Note: Detail may not sum to totals due to rounding. Hispanic population can be of any race.

N/A means not available. Source: U.S. Census Bureau, American Community Survey (ACS)

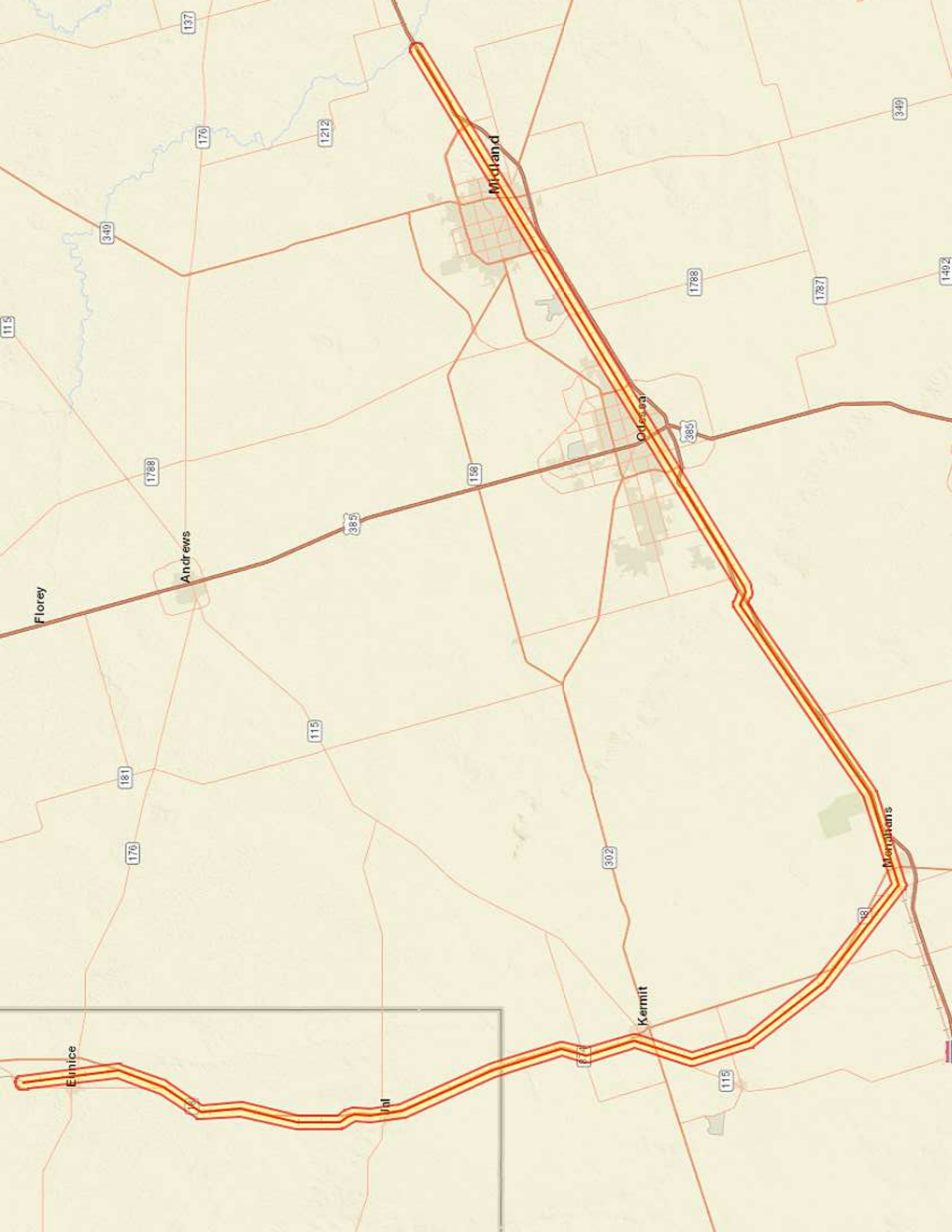
*Households in which no one 14 and over speaks English "very well" or speaks English only.



Location: User-specified linear location
 Ring (buffer): 0.5-mile radius
 Description: Midland to Eunice Rail Line

	2012 - 2016 ACS Estimates	Percent	MOE (±)
Population by Language Spoken at Home*			
Total (persons age 5 and above)	36,463	100%	638
English	19,001	52%	483
Spanish	17,178	47%	592
French	6	0%	19
French Creole	N/A	N/A	N/A
Italian	N/A	N/A	N/A
Portuguese	N/A	N/A	N/A
German	12	0%	21
Yiddish	N/A	N/A	N/A
Other West Germanic	N/A	N/A	N/A
Scandinavian	N/A	N/A	N/A
Greek	N/A	N/A	N/A
Russian	N/A	N/A	N/A
Polish	N/A	N/A	N/A
Serbo-Croatian	N/A	N/A	N/A
Other Slavic	N/A	N/A	N/A
Armenian	N/A	N/A	N/A
Persian	N/A	N/A	N/A
Gujarathi	N/A	N/A	N/A
Hindi	N/A	N/A	N/A
Urdu	N/A	N/A	N/A
Other Indic	N/A	N/A	N/A
Other Indo-European	44	0%	88
Chinese	23	0%	87
Japanese	N/A	N/A	N/A
Korean	6	0%	34
Mon-Khmer, Cambodian	N/A	N/A	N/A
Hmong	N/A	N/A	N/A
Thai	N/A	N/A	N/A
Laotian	N/A	N/A	N/A
Vietnamese	2	0%	18
Other Asian	55	0%	121
Tagalog	7	0%	32
Other Pacific Island	N/A	N/A	N/A
Navajo	N/A	N/A	N/A
Other Native American	N/A	N/A	N/A
Hungarian	N/A	N/A	N/A
Arabic	29	0%	93
Hebrew	N/A	N/A	N/A
African	N/A	N/A	N/A
Other and non-specified	72	0%	105
Total Non-English	17,461	48%	797

Data Note: Detail may not sum to totals due to rounding. Hispanic population can be of any race.
 N/A means not available. Source: U.S. Census Bureau, American Community Survey (ACS) 2012 - 2016.
 *Population by Language Spoken at Home is available at the census tract summary level and up.



Location: User-specified linear location
 Ring (buffer): 0.5-mile radius
 Description: BNSF Harris County

Summary of ACS Estimates		2012 - 2016
Population		153,581
Population Density (per sq. mile)		3,490
Minority Population		113,641
% Minority		74%
Households		53,446
Housing Units		60,162
Housing Units Built Before 1950		9,257
Per Capita Income		25,436
Land Area (sq. miles) (Source: SF1)		44.00
% Land Area		99%
Water Area (sq. miles) (Source: SF1)		0.33
% Water Area		1%

	2012 - 2016 ACS Estimates	Percent	MOE (±)
Population by Race			
Total	153,581	100%	1,543
Population Reporting One Race	150,431	98%	4,500
White	96,569	63%	1,455
Black	30,466	20%	681
American Indian	768	1%	572
Asian	6,856	4%	499
Pacific Islander	63	0%	83
Some Other Race	15,708	10%	1,210
Population Reporting Two or More Races	3,150	2%	320
Total Hispanic Population	74,896	49%	1,424
Total Non-Hispanic Population	78,686		
White Alone	39,941	26%	918
Black Alone	29,751	19%	681
American Indian Alone	324	0%	570
Non-Hispanic Asian Alone	6,812	4%	499
Pacific Islander Alone	63	0%	83
Other Race Alone	266	0%	375
Two or More Races Alone	1,528	1%	269
Population by Sex			
Male	77,125	50%	987
Female	76,457	50%	953
Population by Age			
Age 0-4	12,334	8%	513
Age 0-17	39,405	26%	885
Age 18+	114,176	74%	1,257
Age 65+	14,743	10%	357

Data Note: Detail may not sum to totals due to rounding. Hispanic population can be of any race.
 N/A means not available. Source: U.S. Census Bureau, American Community Survey (ACS) 2012 - 2016.



Location: User-specified linear location
 Ring (buffer): 0.5-mile radius
 Description: BNSF Harris County

	2012 - 2016 ACS Estimates	Percent	MOE (±)
Population 25+ by Educational Attainment			
Total	98,158	100%	917
Less than 9th Grade	13,262	14%	296
9th - 12th Grade, No Diploma	10,461	11%	305
High School Graduate	25,715	26%	885
Some College, No Degree	25,503	26%	624
Associate Degree	5,916	6%	350
Bachelor's Degree or more	23,217	24%	600
Population Age 5+ Years by Ability to Speak English			
Total	141,247	100%	1,464
Speak only English	76,321	54%	1,111
Non-English at Home ¹⁺²⁺³⁺⁴	64,926	46%	1,195
¹ Speak English "very well"	32,371	23%	982
² Speak English "well"	13,101	9%	571
³ Speak English "not well"	11,626	8%	494
⁴ Speak English "not at all"	7,828	6%	405
³⁺⁴ Speak English "less than well"	19,454	14%	510
²⁺³⁺⁴ Speak English "less than very well"	32,555	23%	675
Linguistically Isolated Households*			
Total	7,267	100%	217
Speak Spanish	6,624	91%	216
Speak Other Indo-European Languages	116	2%	76
Speak Asian-Pacific Island Languages	422	6%	178
Speak Other Languages	104	1%	70
Households by Household Income			
Household Income Base	53,446	100%	271
< \$15,000	7,520	14%	179
\$15,000 - \$25,000	6,681	13%	182
\$25,000 - \$50,000	14,119	26%	297
\$50,000 - \$75,000	8,779	16%	325
\$75,000 +	16,348	31%	537
Occupied Housing Units by Tenure			
Total	53,446	100%	271
Owner Occupied	26,891	50%	333
Renter Occupied	26,556	50%	311
Employed Population Age 16+ Years			
Total	118,061	100%	1,003
In Labor Force	78,112	66%	825
Civilian Unemployed in Labor Force	5,899	5%	371
Not In Labor Force	39,949	34%	634

Data Note: Detail may not sum to totals due to rounding. Hispanic population can be of any race.

N/A means not available. Source: U.S. Census Bureau, American Community Survey (ACS)

*Households in which no one 14 and over speaks English "very well" or speaks English only.



Location: User-specified linear location
 Ring (buffer): 0.5-mile radius
 Description: BNSF Harris County

	2012 - 2016 ACS Estimates	Percent	MOE (±)
Population by Language Spoken at Home*			
Total (persons age 5 and above)	144,389	100%	996
English	79,945	55%	914
Spanish	56,718	39%	846
French	513	0%	262
French Creole	N/A	N/A	N/A
Italian	N/A	N/A	N/A
Portuguese	N/A	N/A	N/A
German	393	0%	262
Yiddish	N/A	N/A	N/A
Other West Germanic	N/A	N/A	N/A
Scandinavian	N/A	N/A	N/A
Greek	N/A	N/A	N/A
Russian	N/A	N/A	N/A
Polish	N/A	N/A	N/A
Serbo-Croatian	N/A	N/A	N/A
Other Slavic	N/A	N/A	N/A
Armenian	N/A	N/A	N/A
Persian	N/A	N/A	N/A
Gujarathi	N/A	N/A	N/A
Hindi	N/A	N/A	N/A
Urdu	N/A	N/A	N/A
Other Indic	N/A	N/A	N/A
Other Indo-European	1,873	1%	318
Chinese	866	1%	216
Japanese	N/A	N/A	N/A
Korean	110	0%	66
Mon-Khmer, Cambodian	N/A	N/A	N/A
Hmong	N/A	N/A	N/A
Thai	N/A	N/A	N/A
Laotian	N/A	N/A	N/A
Vietnamese	1,651	1%	351
Other Asian	767	1%	214
Tagalog	272	0%	293
Other Pacific Island	N/A	N/A	N/A
Navajo	N/A	N/A	N/A
Other Native American	N/A	N/A	N/A
Hungarian	N/A	N/A	N/A
Arabic	547	0%	479
Hebrew	N/A	N/A	N/A
African	N/A	N/A	N/A
Other and non-specified	511	0%	147
Total Non-English	64,444	45%	1,252

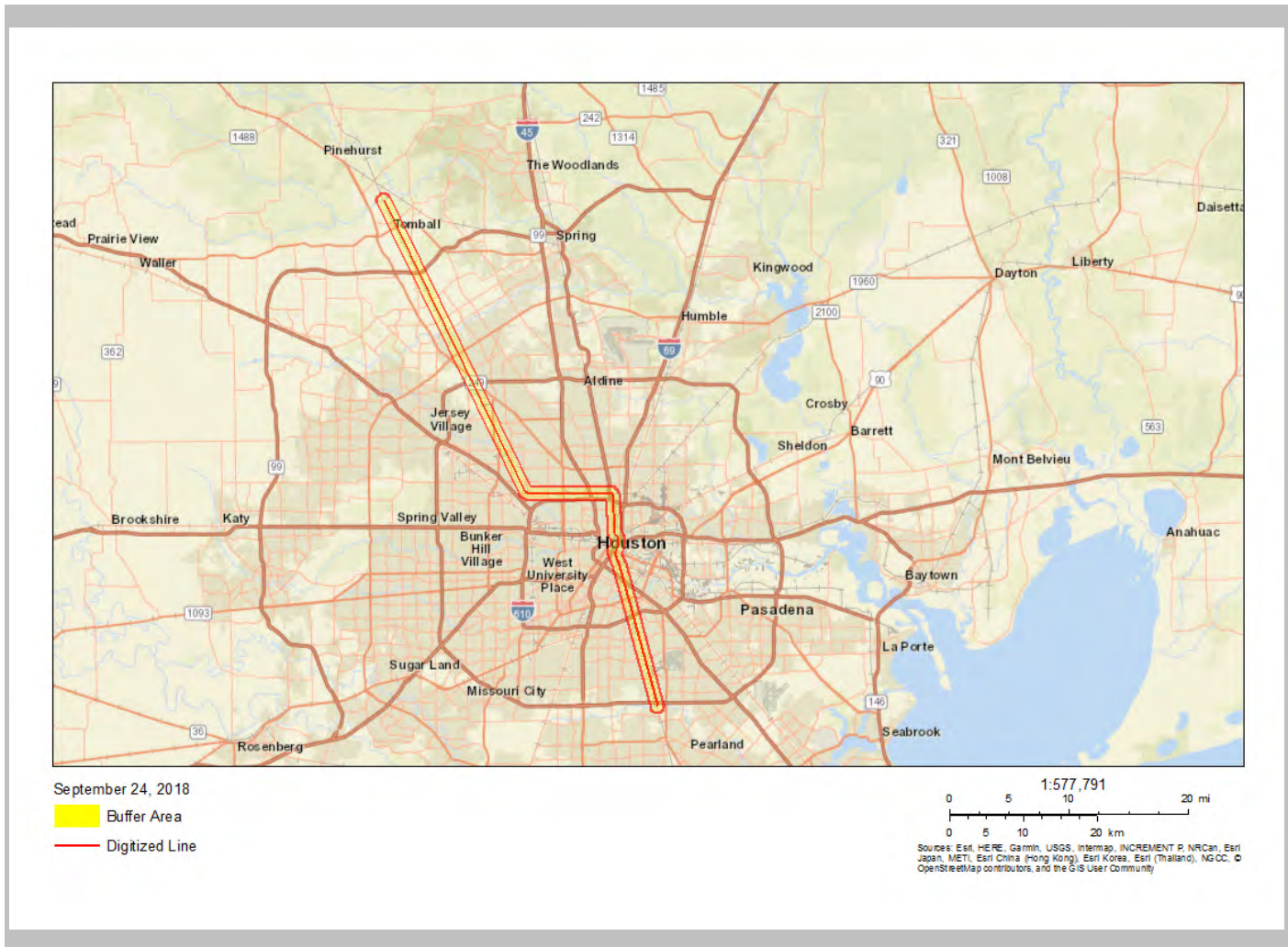
Data Note: Detail may not sum to totals due to rounding. Hispanic population can be of any race.
 N/A means not available. Source: U.S. Census Bureau, American Community Survey (ACS) 2012 - 2016.
 *Population by Language Spoken at Home is available at the census tract summary level and up.

0.5 mile Ring around the Corridor, TEXAS, EPA Region 6

Approximate Population: 153,581

Input Area (sq. miles): 46.38

BNSF Harris County



Sites reporting to EPA	
Superfund NPL	2
Hazardous Waste Treatment, Storage, and Disposal Facilities (TSDF)	13



Location: User-specified linear location
 Ring (buffer): 0.5-mile radius
 Description: UP Beaumont to Houston (South)

Summary of ACS Estimates		2012 - 2016
Population		49,295
Population Density (per sq. mile)		820
Minority Population		35,413
% Minority		72%
Households		17,085
Housing Units		19,213
Housing Units Built Before 1950		3,611
Per Capita Income		22,644
Land Area (sq. miles) (Source: SF1)		60.15
% Land Area		99%
Water Area (sq. miles) (Source: SF1)		0.76
% Water Area		1%

	2012 - 2016 ACS Estimates	Percent	MOE (±)
Population by Race			
Total	49,295	100%	1,198
Population Reporting One Race	48,129	98%	3,356
White	30,832	63%	1,239
Black	14,149	29%	771
American Indian	125	0%	254
Asian	456	1%	405
Pacific Islander	5	0%	124
Some Other Race	2,561	5%	563
Population Reporting Two or More Races	1,167	2%	615
Total Hispanic Population	20,465	42%	1,165
Total Non-Hispanic Population	28,830		
White Alone	13,882	28%	746
Black Alone	13,903	28%	771
American Indian Alone	105	0%	83
Non-Hispanic Asian Alone	456	1%	405
Pacific Islander Alone	5	0%	124
Other Race Alone	16	0%	65
Two or More Races Alone	462	1%	582
Population by Sex			
Male	24,540	50%	705
Female	24,755	50%	861
Population by Age			
Age 0-4	4,274	9%	392
Age 0-17	13,677	28%	789
Age 18+	35,618	72%	1,056
Age 65+	5,603	11%	205

Data Note: Detail may not sum to totals due to rounding. Hispanic population can be of any race.
 N/A means not available. Source: U.S. Census Bureau, American Community Survey (ACS) 2012 - 2016.



Location: User-specified linear location
 Ring (buffer): 0.5-mile radius
 Description: UP Beaumont to Houston (South)

	2012 - 2016 ACS Estimates	Percent	MOE (±)
Population 25+ by Educational Attainment			
Total	30,440	100%	530
Less than 9th Grade	4,650	15%	223
9th - 12th Grade, No Diploma	3,998	13%	209
High School Graduate	9,800	32%	424
Some College, No Degree	8,197	27%	621
Associate Degree	1,564	5%	400
Bachelor's Degree or more	3,795	12%	603
Population Age 5+ Years by Ability to Speak English			
Total	45,021	100%	1,180
Speak only English	27,567	61%	824
Non-English at Home ¹⁺²⁺³⁺⁴	17,454	39%	1,064
¹ Speak English "very well"	9,030	20%	692
² Speak English "well"	3,145	7%	721
³ Speak English "not well"	2,850	6%	231
⁴ Speak English "not at all"	2,430	5%	338
³⁺⁴ Speak English "less than well"	5,280	12%	345
²⁺³⁺⁴ Speak English "less than very well"	8,425	19%	768
Linguistically Isolated Households*			
Total	1,790	100%	153
Speak Spanish	1,694	95%	152
Speak Other Indo-European Languages	26	1%	28
Speak Asian-Pacific Island Languages	48	3%	58
Speak Other Languages	22	1%	59
Households by Household Income			
Household Income Base	17,085	100%	212
< \$15,000	3,285	19%	163
\$15,000 - \$25,000	2,520	15%	170
\$25,000 - \$50,000	4,737	28%	314
\$50,000 - \$75,000	3,044	18%	234
\$75,000 +	3,499	20%	585
Occupied Housing Units by Tenure			
Total	17,085	100%	212
Owner Occupied	9,525	56%	286
Renter Occupied	7,560	44%	253
Employed Population Age 16+ Years			
Total	37,020	100%	701
In Labor Force	22,295	60%	600
Civilian Unemployed in Labor Force	1,711	5%	219
Not In Labor Force	14,725	40%	477

Data Note: Detail may not sum to totals due to rounding. Hispanic population can be of any race.

N/A means not available. Source: U.S. Census Bureau, American Community Survey (ACS)

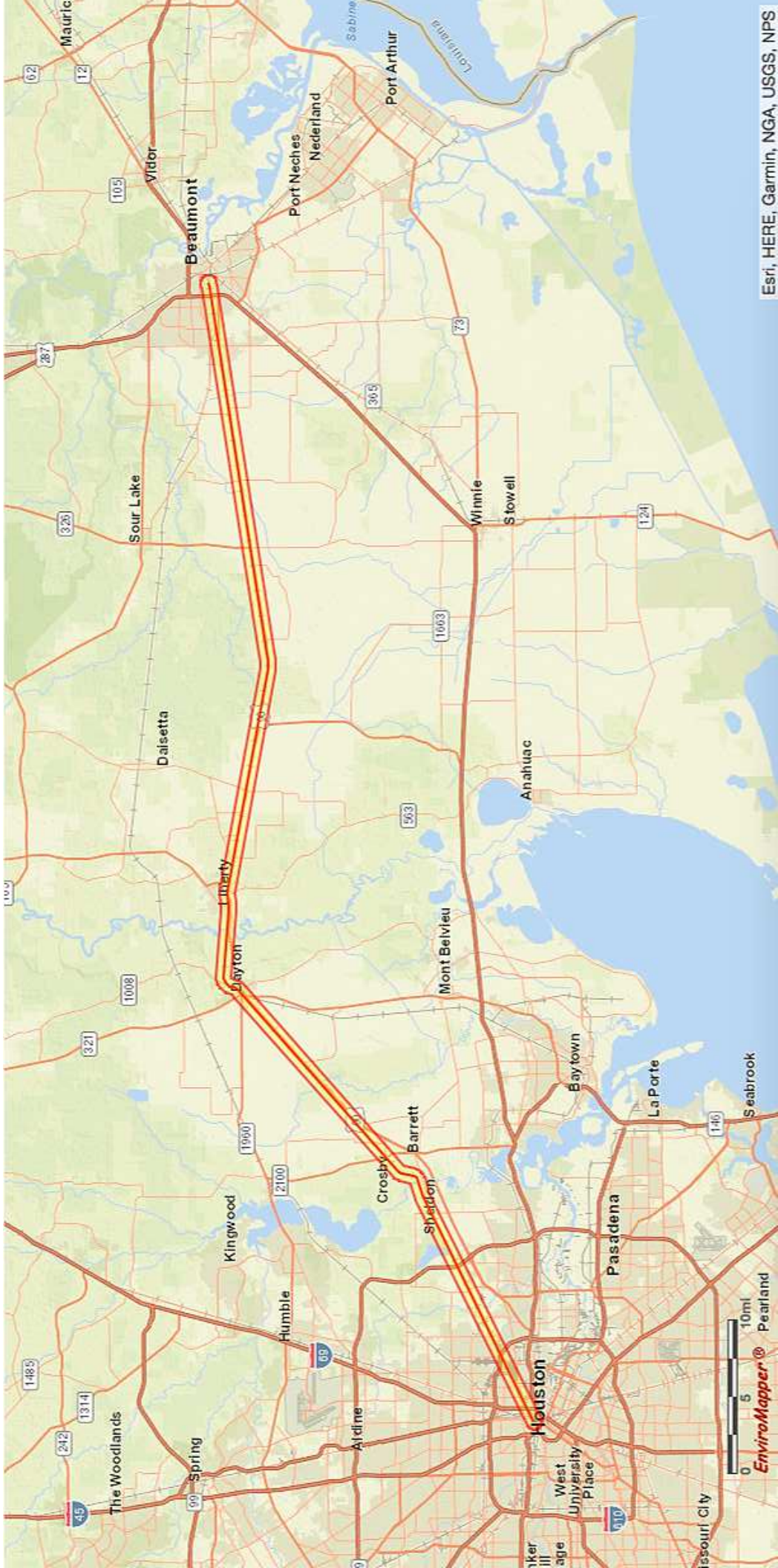
*Households in which no one 14 and over speaks English "very well" or speaks English only.



Location: User-specified linear location
 Ring (buffer): 0.5-mile radius
 Description: UP Beaumont to Houston (South)

	2012 - 2016 ACS Estimates	Percent	MOE (±)
Population by Language Spoken at Home*			
Total (persons age 5 and above)	48,635	100%	960
English	29,314	60%	746
Spanish	18,387	38%	941
French	189	0%	106
French Creole	N/A	N/A	N/A
Italian	N/A	N/A	N/A
Portuguese	N/A	N/A	N/A
German	57	0%	59
Yiddish	N/A	N/A	N/A
Other West Germanic	N/A	N/A	N/A
Scandinavian	N/A	N/A	N/A
Greek	N/A	N/A	N/A
Russian	N/A	N/A	N/A
Polish	N/A	N/A	N/A
Serbo-Croatian	N/A	N/A	N/A
Other Slavic	N/A	N/A	N/A
Armenian	N/A	N/A	N/A
Persian	N/A	N/A	N/A
Gujarathi	N/A	N/A	N/A
Hindi	N/A	N/A	N/A
Urdu	N/A	N/A	N/A
Other Indic	N/A	N/A	N/A
Other Indo-European	272	1%	229
Chinese	14	0%	20
Japanese	N/A	N/A	N/A
Korean	0	0%	20
Mon-Khmer, Cambodian	N/A	N/A	N/A
Hmong	N/A	N/A	N/A
Thai	N/A	N/A	N/A
Laotian	N/A	N/A	N/A
Vietnamese	112	0%	211
Other Asian	104	0%	176
Tagalog	53	0%	84
Other Pacific Island	N/A	N/A	N/A
Navajo	N/A	N/A	N/A
Other Native American	N/A	N/A	N/A
Hungarian	N/A	N/A	N/A
Arabic	2	0%	20
Hebrew	N/A	N/A	N/A
African	N/A	N/A	N/A
Other and non-specified	123	0%	68
Total Non-English	19,321	40%	1,212

Data Note: Detail may not sum to totals due to rounding. Hispanic population can be of any race.
 N/A means not available. Source: U.S. Census Bureau, American Community Survey (ACS) 2012 - 2016.
 *Population by Language Spoken at Home is available at the census tract summary level and up.





Location: User-specified linear location
 Ring (buffer): 0.5-mile radius
 Description: UP Texarkana to Dallas

Summary of ACS Estimates		2012 - 2016
Population		92,054
Population Density (per sq. mile)		584
Minority Population		57,693
% Minority		63%
Households		29,955
Housing Units		34,514
Housing Units Built Before 1950		5,647
Per Capita Income		20,261
Land Area (sq. miles) (Source: SF1)		157.75
% Land Area		98%
Water Area (sq. miles) (Source: SF1)		3.19
% Water Area		2%

	2012 - 2016 ACS Estimates	Percent	MOE (±)
Population by Race			
Total	92,054	100%	865
Population Reporting One Race	89,982	98%	2,365
White	59,160	64%	726
Black	25,172	27%	721
American Indian	498	1%	200
Asian	912	1%	235
Pacific Islander	40	0%	44
Some Other Race	4,200	5%	439
Population Reporting Two or More Races	2,072	2%	265
Total Hispanic Population	30,006	33%	730
Total Non-Hispanic Population	62,048		
White Alone	34,361	37%	661
Black Alone	24,953	27%	717
American Indian Alone	333	0%	200
Non-Hispanic Asian Alone	883	1%	235
Pacific Islander Alone	9	0%	23
Other Race Alone	85	0%	101
Two or More Races Alone	1,424	2%	239
Population by Sex			
Male	44,983	49%	606
Female	47,071	51%	503
Population by Age			
Age 0-4	6,929	8%	302
Age 0-17	25,685	28%	413
Age 18+	66,369	72%	577
Age 65+	10,443	11%	204

Data Note: Detail may not sum to totals due to rounding. Hispanic population can be of any race.
 N/A means not available. Source: U.S. Census Bureau, American Community Survey (ACS) 2012 - 2016.



Location: User-specified linear location
 Ring (buffer): 0.5-mile radius
 Description: UP Texarkana to Dallas

	2012 - 2016 ACS Estimates	Percent	MOE (±)
Population 25+ by Educational Attainment			
Total	57,305	100%	535
Less than 9th Grade	6,750	12%	221
9th - 12th Grade, No Diploma	7,911	14%	227
High School Graduate	18,306	32%	392
Some College, No Degree	16,335	29%	292
Associate Degree	3,296	6%	182
Bachelor's Degree or more	8,004	14%	383
Population Age 5+ Years by Ability to Speak English			
Total	85,125	100%	754
Speak only English	59,266	70%	617
Non-English at Home ¹⁺²⁺³⁺⁴	25,859	30%	517
¹ Speak English "very well"	14,700	17%	396
² Speak English "well"	4,041	5%	225
³ Speak English "not well"	4,277	5%	367
⁴ Speak English "not at all"	2,841	3%	235
³⁺⁴ Speak English "less than well"	7,118	8%	367
²⁺³⁺⁴ Speak English "less than very well"	11,159	13%	367
Linguistically Isolated Households*			
Total	1,991	100%	114
Speak Spanish	1,952	98%	103
Speak Other Indo-European Languages	12	1%	23
Speak Asian-Pacific Island Languages	26	1%	59
Speak Other Languages	0	0%	113
Households by Household Income			
Household Income Base	29,955	100%	245
< \$15,000	5,293	18%	150
\$15,000 - \$25,000	4,530	15%	145
\$25,000 - \$50,000	8,165	27%	165
\$50,000 - \$75,000	5,064	17%	216
\$75,000 +	6,903	23%	246
Occupied Housing Units by Tenure			
Total	29,955	100%	245
Owner Occupied	16,856	56%	200
Renter Occupied	13,099	44%	239
Employed Population Age 16+ Years			
Total	68,944	100%	617
In Labor Force	40,774	59%	572
Civilian Unemployed in Labor Force	3,327	5%	239
Not In Labor Force	28,170	41%	577

Data Note: Detail may not sum to totals due to rounding. Hispanic population can be of any race.

N/A means not available. Source: U.S. Census Bureau, American Community Survey (ACS)

*Households in which no one 14 and over speaks English "very well" or speaks English only.



Location: User-specified linear location
 Ring (buffer): 0.5-mile radius
 Description: UP Texarkana to Dallas

	2012 - 2016 ACS Estimates	Percent	MOE (±)
Population by Language Spoken at Home*			
Total (persons age 5 and above)	79,734	100%	961
English	55,134	69%	938
Spanish	22,869	29%	1,030
French	182	0%	78
French Creole	N/A	N/A	N/A
Italian	N/A	N/A	N/A
Portuguese	N/A	N/A	N/A
German	110	0%	145
Yiddish	N/A	N/A	N/A
Other West Germanic	N/A	N/A	N/A
Scandinavian	N/A	N/A	N/A
Greek	N/A	N/A	N/A
Russian	N/A	N/A	N/A
Polish	N/A	N/A	N/A
Serbo-Croatian	N/A	N/A	N/A
Other Slavic	N/A	N/A	N/A
Armenian	N/A	N/A	N/A
Persian	N/A	N/A	N/A
Gujarathi	N/A	N/A	N/A
Hindi	N/A	N/A	N/A
Urdu	N/A	N/A	N/A
Other Indic	N/A	N/A	N/A
Other Indo-European	212	0%	123
Chinese	112	0%	108
Japanese	N/A	N/A	N/A
Korean	90	0%	79
Mon-Khmer, Cambodian	N/A	N/A	N/A
Hmong	N/A	N/A	N/A
Thai	N/A	N/A	N/A
Laotian	N/A	N/A	N/A
Vietnamese	167	0%	108
Other Asian	305	0%	196
Tagalog	98	0%	106
Other Pacific Island	N/A	N/A	N/A
Navajo	N/A	N/A	N/A
Other Native American	N/A	N/A	N/A
Hungarian	N/A	N/A	N/A
Arabic	25	0%	37
Hebrew	N/A	N/A	N/A
African	N/A	N/A	N/A
Other and non-specified	355	0%	183
Total Non-English	24,600	31%	1,191

Data Note: Detail may not sum to totals due to rounding. Hispanic population can be of any race.
 N/A means not available. Source: U.S. Census Bureau, American Community Survey (ACS) 2012 - 2016.
 *Population by Language Spoken at Home is available at the census tract summary level and up.





Location: User-specified linear location
 Ring (buffer): 0.5-mile radius
 Description: UP Forth Worth to Midland

Summary of ACS Estimates		2012 - 2016
Population		84,563
Population Density (per sq. mile)		363
Minority Population		31,173
% Minority		37%
Households		32,085
Housing Units		37,951
Housing Units Built Before 1950		6,599
Per Capita Income		28,291
Land Area (sq. miles) (Source: SF1)		232.80
% Land Area		99%
Water Area (sq. miles) (Source: SF1)		1.56
% Water Area		1%

	2012 - 2016 ACS Estimates	Percent	MOE (±)
Population by Race			
Total	84,563	100%	736
Population Reporting One Race	82,830	98%	1,788
White	70,245	83%	669
Black	5,478	6%	362
American Indian	464	1%	161
Asian	949	1%	163
Pacific Islander	65	0%	38
Some Other Race	5,629	7%	395
Population Reporting Two or More Races	1,733	2%	160
Total Hispanic Population	23,387	28%	632
Total Non-Hispanic Population	61,176		
White Alone	53,390	63%	639
Black Alone	5,191	6%	343
American Indian Alone	360	0%	156
Non-Hispanic Asian Alone	930	1%	163
Pacific Islander Alone	59	0%	38
Other Race Alone	109	0%	82
Two or More Races Alone	1,136	1%	157
Population by Sex			
Male	40,769	48%	398
Female	43,794	52%	476
Population by Age			
Age 0-4	6,154	7%	326
Age 0-17	21,239	25%	375
Age 18+	63,324	75%	540
Age 65+	12,171	14%	227

Data Note: Detail may not sum to totals due to rounding. Hispanic population can be of any race.
 N/A means not available. Source: U.S. Census Bureau, American Community Survey (ACS) 2012 - 2016.



Location: User-specified linear location
 Ring (buffer): 0.5-mile radius
 Description: UP Forth Worth to Midland

	2012 - 2016 ACS Estimates	Percent	MOE (±)
Population 25+ by Educational Attainment			
Total	54,499	100%	470
Less than 9th Grade	3,875	7%	145
9th - 12th Grade, No Diploma	4,835	9%	242
High School Graduate	15,879	29%	295
Some College, No Degree	16,973	31%	227
Associate Degree	3,834	7%	135
Bachelor's Degree or more	12,937	24%	219
Population Age 5+ Years by Ability to Speak English			
Total	78,409	100%	672
Speak only English	62,988	80%	548
Non-English at Home ¹⁺²⁺³⁺⁴	15,421	20%	493
¹ Speak English "very well"	10,498	13%	329
² Speak English "well"	2,244	3%	289
³ Speak English "not well"	1,990	3%	287
⁴ Speak English "not at all"	690	1%	138
³⁺⁴ Speak English "less than well"	2,680	3%	306
²⁺³⁺⁴ Speak English "less than very well"	4,923	6%	328
Linguistically Isolated Households*			
Total	1,210	100%	91
Speak Spanish	1,006	83%	90
Speak Other Indo-European Languages	34	3%	41
Speak Asian-Pacific Island Languages	45	4%	33
Speak Other Languages	124	10%	79
Households by Household Income			
Household Income Base	32,085	100%	219
< \$15,000	4,715	15%	135
\$15,000 - \$25,000	3,758	12%	135
\$25,000 - \$50,000	8,122	25%	239
\$50,000 - \$75,000	6,386	20%	174
\$75,000 +	9,105	28%	239
Occupied Housing Units by Tenure			
Total	32,085	100%	219
Owner Occupied	18,745	58%	216
Renter Occupied	13,340	42%	184
Employed Population Age 16+ Years			
Total	65,582	100%	542
In Labor Force	40,440	62%	412
Civilian Unemployed in Labor Force	2,250	3%	187
Not In Labor Force	25,142	38%	481

Data Note: Detail may not sum to totals due to rounding. Hispanic population can be of any race.

N/A means not available. Source: U.S. Census Bureau, American Community Survey (ACS)

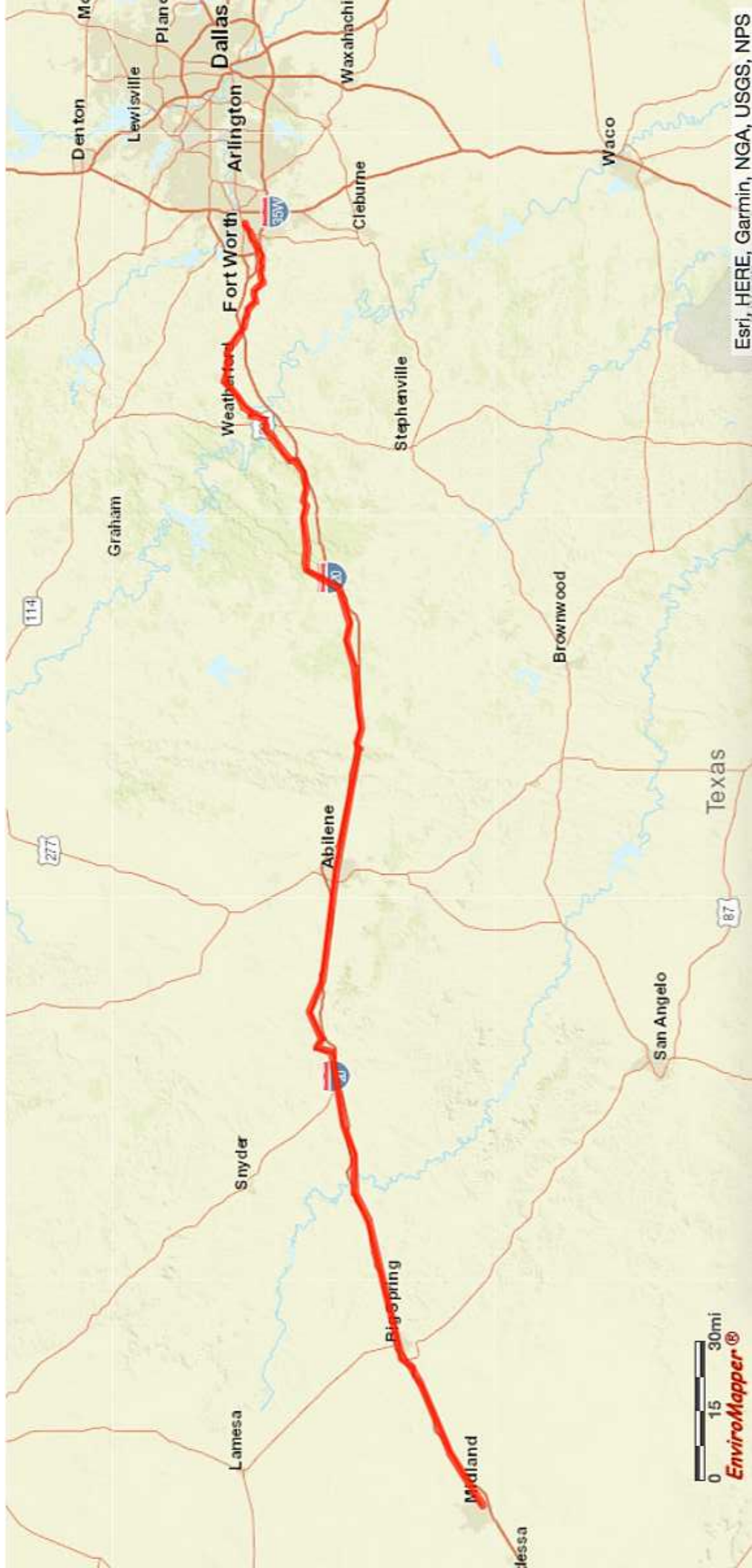
*Households in which no one 14 and over speaks English "very well" or speaks English only.



Location: User-specified linear location
 Ring (buffer): 0.5-mile radius
 Description: UP Forth Worth to Midland

	2012 - 2016 ACS Estimates	Percent	MOE (±)
Population by Language Spoken at Home*			
Total (persons age 5 and above)	71,456	100%	875
English	56,616	79%	890
Spanish	13,208	18%	579
French	160	0%	164
French Creole	N/A	N/A	N/A
Italian	N/A	N/A	N/A
Portuguese	N/A	N/A	N/A
German	191	0%	117
Yiddish	N/A	N/A	N/A
Other West Germanic	N/A	N/A	N/A
Scandinavian	N/A	N/A	N/A
Greek	N/A	N/A	N/A
Russian	N/A	N/A	N/A
Polish	N/A	N/A	N/A
Serbo-Croatian	N/A	N/A	N/A
Other Slavic	N/A	N/A	N/A
Armenian	N/A	N/A	N/A
Persian	N/A	N/A	N/A
Gujarathi	N/A	N/A	N/A
Hindi	N/A	N/A	N/A
Urdu	N/A	N/A	N/A
Other Indic	N/A	N/A	N/A
Other Indo-European	310	0%	164
Chinese	62	0%	91
Japanese	N/A	N/A	N/A
Korean	108	0%	163
Mon-Khmer, Cambodian	N/A	N/A	N/A
Hmong	N/A	N/A	N/A
Thai	N/A	N/A	N/A
Laotian	N/A	N/A	N/A
Vietnamese	46	0%	56
Other Asian	198	0%	113
Tagalog	74	0%	40
Other Pacific Island	N/A	N/A	N/A
Navajo	N/A	N/A	N/A
Other Native American	N/A	N/A	N/A
Hungarian	N/A	N/A	N/A
Arabic	27	0%	48
Hebrew	N/A	N/A	N/A
African	N/A	N/A	N/A
Other and non-specified	322	0%	241
Total Non-English	14,840	21%	1,248

Data Note: Detail may not sum to totals due to rounding. Hispanic population can be of any race.
 N/A means not available. Source: U.S. Census Bureau, American Community Survey (ACS) 2012 - 2016.
 *Population by Language Spoken at Home is available at the census tract summary level and up.



Esri, HERE, Garmin, NGA, USGS, NPS

Location: User-specified linear location
 Ring (buffer): 0.5-mile radius
 Description: UP Tarrant County

Summary of ACS Estimates		2012 - 2016
Population		74,450
Population Density (per sq. mile)		2,244
Minority Population		32,558
% Minority		44%
Households		27,417
Housing Units		29,763
Housing Units Built Before 1950		2,999
Per Capita Income		33,226
Land Area (sq. miles) (Source: SF1)		33.18
% Land Area		99%
Water Area (sq. miles) (Source: SF1)		0.29
% Water Area		1%

	2012 - 2016 ACS Estimates	Percent	MOE (±)
Population by Race			
Total	74,450	100%	1,613
Population Reporting One Race	71,837	96%	3,480
White	54,791	74%	1,335
Black	6,814	9%	1,062
American Indian	313	0%	175
Asian	4,536	6%	476
Pacific Islander	59	0%	37
Some Other Race	5,324	7%	395
Population Reporting Two or More Races	2,613	4%	674
Total Hispanic Population	19,294	26%	803
Total Non-Hispanic Population	55,156		
White Alone	41,891	56%	1,126
Black Alone	6,455	9%	1,062
American Indian Alone	210	0%	134
Non-Hispanic Asian Alone	4,524	6%	476
Pacific Islander Alone	30	0%	22
Other Race Alone	106	0%	73
Two or More Races Alone	1,940	3%	674
Population by Sex			
Male	36,984	50%	890
Female	37,466	50%	965
Population by Age			
Age 0-4	5,448	7%	332
Age 0-17	19,780	27%	722
Age 18+	54,669	73%	678
Age 65+	7,277	10%	281

Data Note: Detail may not sum to totals due to rounding. Hispanic population can be of any race.
 N/A means not available. Source: U.S. Census Bureau, American Community Survey (ACS) 2012 - 2016.

Location: User-specified linear location
 Ring (buffer): 0.5-mile radius
 Description: UP Tarrant County

	2012 - 2016 ACS Estimates	Percent	MOE (±)
Population 25+ by Educational Attainment			
Total	47,834	100%	749
Less than 9th Grade	2,835	6%	151
9th - 12th Grade, No Diploma	3,633	8%	151
High School Graduate	11,402	24%	348
Some College, No Degree	14,136	30%	412
Associate Degree	3,104	6%	192
Bachelor's Degree or more	15,828	33%	443
Population Age 5+ Years by Ability to Speak English			
Total	69,002	100%	1,470
Speak only English	50,342	73%	944
Non-English at Home ¹⁺²⁺³⁺⁴	18,660	27%	825
¹ Speak English "very well"	10,530	15%	464
² Speak English "well"	4,446	6%	434
³ Speak English "not well"	2,795	4%	632
⁴ Speak English "not at all"	889	1%	141
³⁺⁴ Speak English "less than well"	3,684	5%	632
²⁺³⁺⁴ Speak English "less than very well"	8,130	12%	767
Linguistically Isolated Households*			
Total	1,593	100%	215
Speak Spanish	989	62%	114
Speak Other Indo-European Languages	140	9%	75
Speak Asian-Pacific Island Languages	330	21%	98
Speak Other Languages	134	8%	215
Households by Household Income			
Household Income Base	27,417	100%	360
< \$15,000	2,721	10%	172
\$15,000 - \$25,000	2,259	8%	161
\$25,000 - \$50,000	6,143	22%	268
\$50,000 - \$75,000	5,564	20%	219
\$75,000 +	10,731	39%	353
Occupied Housing Units by Tenure			
Total	27,417	100%	360
Owner Occupied	15,609	57%	354
Renter Occupied	11,809	43%	305
Employed Population Age 16+ Years			
Total	56,704	100%	822
In Labor Force	38,440	68%	612
Civilian Unemployed in Labor Force	2,378	4%	175
Not In Labor Force	18,264	32%	462

Data Note: Detail may not sum to totals due to rounding. Hispanic population can be of any race.

N/A means not available. Source: U.S. Census Bureau, American Community Survey (ACS)

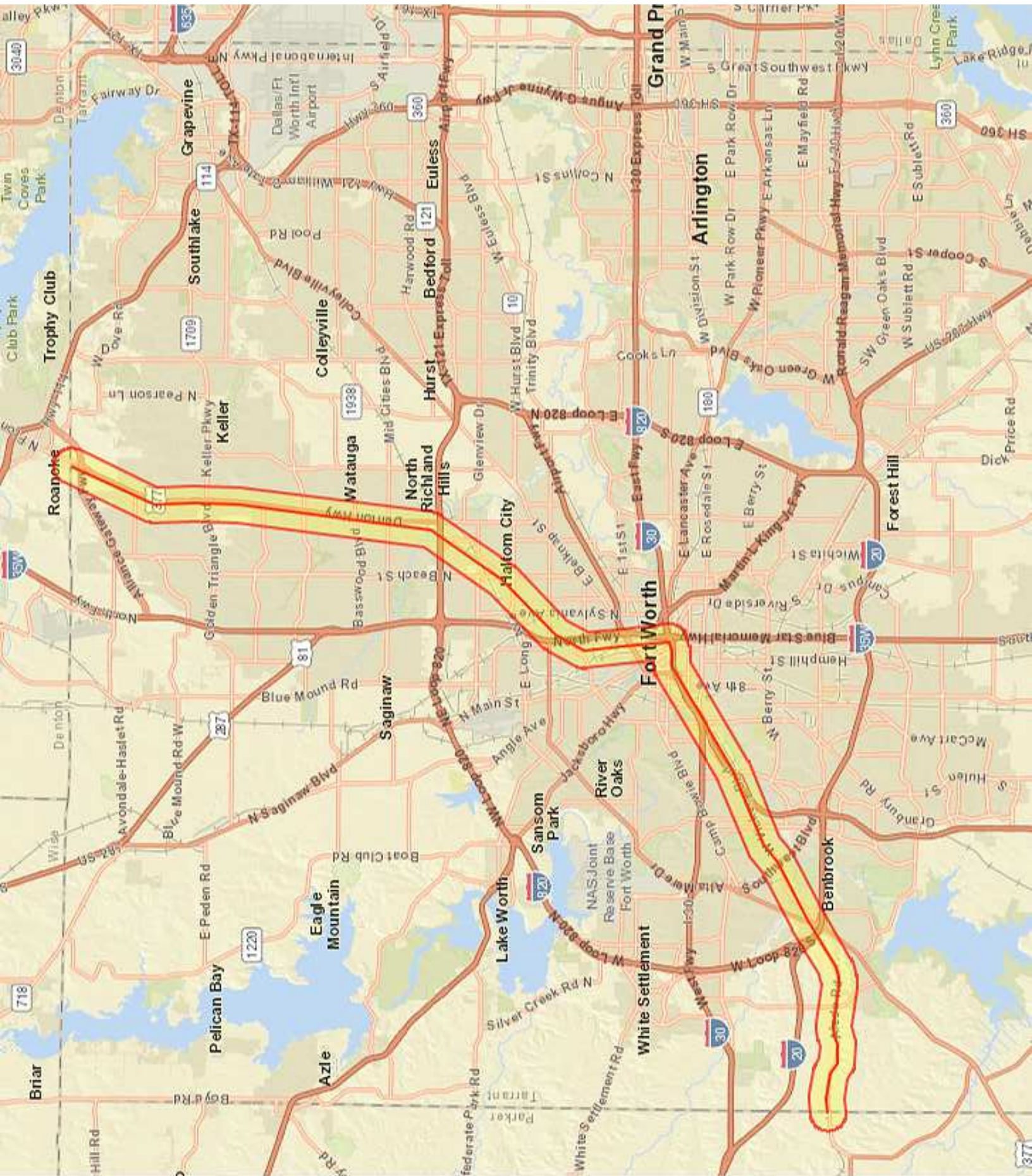
*Households in which no one 14 and over speaks English "very well" or speaks English only.



Location: User-specified linear location
 Ring (buffer): 0.5-mile radius
 Description: UP Tarrant County

	2012 - 2016 ACS Estimates	Percent	MOE (±)
Population by Language Spoken at Home*			
Total (persons age 5 and above)	76,917	100%	1,527
English	57,716	75%	1,736
Spanish	13,812	18%	820
French	289	0%	326
French Creole	N/A	N/A	N/A
Italian	N/A	N/A	N/A
Portuguese	N/A	N/A	N/A
German	142	0%	77
Yiddish	N/A	N/A	N/A
Other West Germanic	N/A	N/A	N/A
Scandinavian	N/A	N/A	N/A
Greek	N/A	N/A	N/A
Russian	N/A	N/A	N/A
Polish	N/A	N/A	N/A
Serbo-Croatian	N/A	N/A	N/A
Other Slavic	N/A	N/A	N/A
Armenian	N/A	N/A	N/A
Persian	N/A	N/A	N/A
Gujarathi	N/A	N/A	N/A
Hindi	N/A	N/A	N/A
Urdu	N/A	N/A	N/A
Other Indic	N/A	N/A	N/A
Other Indo-European	1,343	2%	425
Chinese	113	0%	86
Japanese	N/A	N/A	N/A
Korean	190	0%	225
Mon-Khmer, Cambodian	N/A	N/A	N/A
Hmong	N/A	N/A	N/A
Thai	N/A	N/A	N/A
Laotian	N/A	N/A	N/A
Vietnamese	1,015	1%	489
Other Asian	1,162	2%	342
Tagalog	259	0%	442
Other Pacific Island	N/A	N/A	N/A
Navajo	N/A	N/A	N/A
Other Native American	N/A	N/A	N/A
Hungarian	N/A	N/A	N/A
Arabic	149	0%	100
Hebrew	N/A	N/A	N/A
African	N/A	N/A	N/A
Other and non-specified	544	1%	1,091
Total Non-English	19,201	25%	2,312

Data Note: Detail may not sum to totals due to rounding. Hispanic population can be of any race.
 N/A means not available. Source: U.S. Census Bureau, American Community Survey (ACS) 2012 - 2016.
 *Population by Language Spoken at Home is available at the census tract summary level and up.





Location: User-specified linear location
 Ring (buffer): 0.5-mile radius
 Description: UP Shreveport to Dallas

Summary of ACS Estimates		2012 - 2016
Population		97,323
Population Density (per sq. mile)		667
Minority Population		59,106
% Minority		61%
Households		31,931
Housing Units		36,933
Housing Units Built Before 1950		5,244
Per Capita Income		20,272
Land Area (sq. miles) (Source: SF1)		145.85
% Land Area		98%
Water Area (sq. miles) (Source: SF1)		2.37
% Water Area		2%

	2012 - 2016 ACS Estimates	Percent	MOE (±)
Population by Race			
Total	97,323	100%	865
Population Reporting One Race	95,616	98%	2,599
White	59,933	62%	726
Black	31,635	33%	774
American Indian	492	1%	200
Asian	925	1%	235
Pacific Islander	41	0%	335
Some Other Race	2,591	3%	329
Population Reporting Two or More Races	1,706	2%	265
Total Hispanic Population	25,222	26%	730
Total Non-Hispanic Population	72,101		
White Alone	38,217	39%	661
Black Alone	31,358	32%	774
American Indian Alone	347	0%	200
Non-Hispanic Asian Alone	916	1%	235
Pacific Islander Alone	37	0%	335
Other Race Alone	62	0%	170
Two or More Races Alone	1,164	1%	239
Population by Sex			
Male	46,956	48%	493
Female	50,367	52%	571
Population by Age			
Age 0-4	7,793	8%	302
Age 0-17	27,394	28%	413
Age 18+	69,929	72%	513
Age 65+	11,419	12%	204

Data Note: Detail may not sum to totals due to rounding. Hispanic population can be of any race.
 N/A means not available. Source: U.S. Census Bureau, American Community Survey (ACS) 2012 - 2016.



Location: User-specified linear location
 Ring (buffer): 0.5-mile radius
 Description: UP Shreveport to Dallas

	2012 - 2016 ACS Estimates	Percent	MOE (±)
Population 25+ by Educational Attainment			
Total	60,056	100%	482
Less than 9th Grade	5,952	10%	221
9th - 12th Grade, No Diploma	8,268	14%	190
High School Graduate	20,469	34%	392
Some College, No Degree	17,203	29%	292
Associate Degree	3,628	6%	182
Bachelor's Degree or more	8,164	14%	360
Population Age 5+ Years by Ability to Speak English			
Total	89,530	100%	754
Speak only English	68,561	77%	617
Non-English at Home ¹⁺²⁺³⁺⁴	20,969	23%	517
¹ Speak English "very well"	12,073	13%	396
² Speak English "well"	3,196	4%	225
³ Speak English "not well"	3,526	4%	367
⁴ Speak English "not at all"	2,174	2%	235
³⁺⁴ Speak English "less than well"	5,700	6%	367
²⁺³⁺⁴ Speak English "less than very well"	8,896	10%	367
Linguistically Isolated Households*			
Total	1,673	100%	114
Speak Spanish	1,619	97%	103
Speak Other Indo-European Languages	21	1%	24
Speak Asian-Pacific Island Languages	33	2%	59
Speak Other Languages	0	0%	113
Households by Household Income			
Household Income Base	31,931	100%	205
< \$15,000	5,897	18%	150
\$15,000 - \$25,000	4,824	15%	150
\$25,000 - \$50,000	8,695	27%	166
\$50,000 - \$75,000	5,272	17%	216
\$75,000 +	7,242	23%	246
Occupied Housing Units by Tenure			
Total	31,931	100%	205
Owner Occupied	18,808	59%	200
Renter Occupied	13,123	41%	203
Employed Population Age 16+ Years			
Total	72,754	100%	589
In Labor Force	42,802	59%	572
Civilian Unemployed in Labor Force	3,531	5%	239
Not In Labor Force	29,952	41%	446

Data Note: Detail may not sum to totals due to rounding. Hispanic population can be of any race.

N/A means not available. Source: U.S. Census Bureau, American Community Survey (ACS)

*Households in which no one 14 and over speaks English "very well" or speaks English only.



Location: User-specified linear location

Ring (buffer): 0.5-mile radius

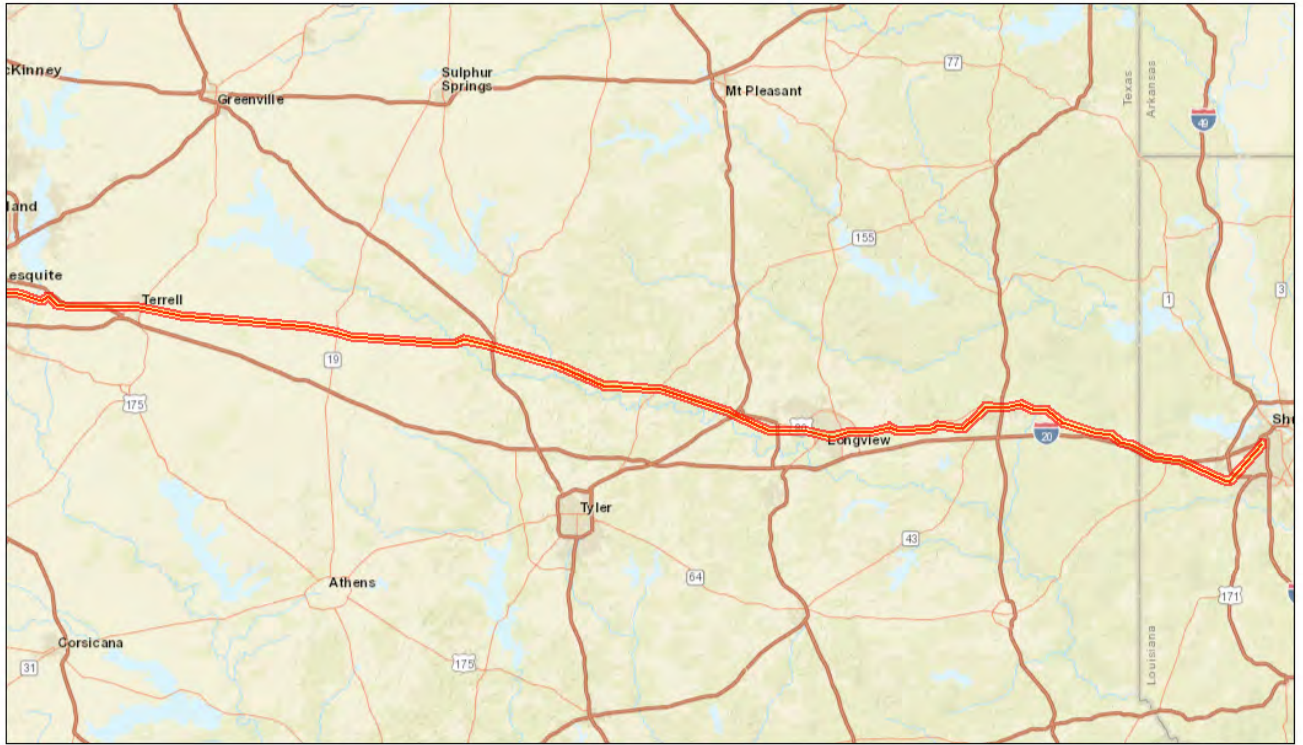
Description: UP Shreveport to Dallas

	2012 - 2016 ACS Estimates	Percent	MOE (±)
Population by Language Spoken at Home*			
Total (persons age 5 and above)	80,152	100%	961
English	58,853	73%	938
Spanish	19,831	25%	1,030
French	83	0%	78
French Creole	N/A	N/A	N/A
Italian	N/A	N/A	N/A
Portuguese	N/A	N/A	N/A
German	84	0%	145
Yiddish	N/A	N/A	N/A
Other West Germanic	N/A	N/A	N/A
Scandinavian	N/A	N/A	N/A
Greek	N/A	N/A	N/A
Russian	N/A	N/A	N/A
Polish	N/A	N/A	N/A
Serbo-Croatian	N/A	N/A	N/A
Other Slavic	N/A	N/A	N/A
Armenian	N/A	N/A	N/A
Persian	N/A	N/A	N/A
Gujarathi	N/A	N/A	N/A
Hindi	N/A	N/A	N/A
Urdu	N/A	N/A	N/A
Other Indic	N/A	N/A	N/A
Other Indo-European	204	0%	123
Chinese	88	0%	108
Japanese	N/A	N/A	N/A
Korean	51	0%	85
Mon-Khmer, Cambodian	N/A	N/A	N/A
Hmong	N/A	N/A	N/A
Thai	N/A	N/A	N/A
Laotian	N/A	N/A	N/A
Vietnamese	146	0%	108
Other Asian	325	0%	196
Tagalog	131	0%	106
Other Pacific Island	N/A	N/A	N/A
Navajo	N/A	N/A	N/A
Other Native American	N/A	N/A	N/A
Hungarian	N/A	N/A	N/A
Arabic	17	0%	37
Hebrew	N/A	N/A	N/A
African	N/A	N/A	N/A
Other and non-specified	296	0%	183
Total Non-English	21,299	27%	1,191

Data Note: Detail may not sum to totals due to rounding. Hispanic population can be of any race.

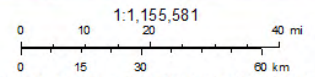
N/A means not available. Source: U.S. Census Bureau, American Community Survey (ACS) 2012 - 2016.

*Population by Language Spoken at Home is available at the census tract summary level and up.



November 19, 2018

- Buffer Area
- Digitized Line



Sources: Esri, HERE, Garmin, USGS, Intermap, INCREMENT P, NRCan, Esri Japan, METI, Esri China (Hong Kong), Esri Korea, Esri (Thailand), NGCC, © OpenStreetMap contributors, and the GIS User Community